

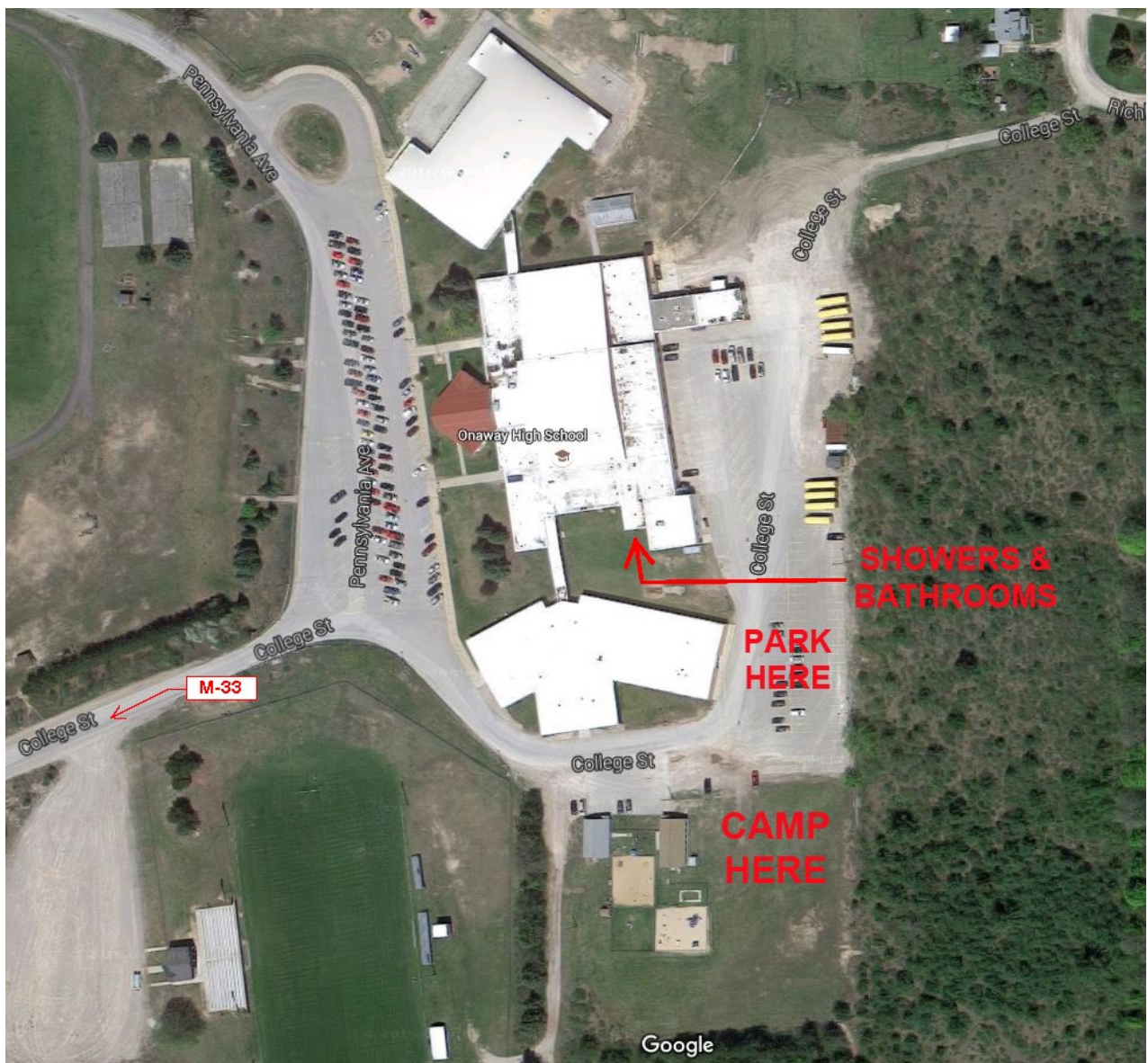
2018 GREAT LAKES RELAY CAMPING

There are 4 rules that you must follow while camping:

1. No drinking on school grounds – it's against the law.
2. Do not throw empty beer cans in the school's garbage. Even if you didn't drink it on school grounds it's still the same as having had alcohol on school grounds.
3. Find the dumpster in the front of the school and put your garbage in it. Do not leave your garbage by the garbage cans around the school grounds – we have too much.
4. Quiet time starts at 11:00 p.m. Be respectful of the other teams and the community.

You can use the bathrooms and showers. If you do not follow rules 1-4 above we will not be welcome back. You are not allowed to sleep in the school. Set up camp on the grass. Please leave the school grounds the way they were when you arrived – that means we don't want anyone to know we were there when we leave.

Friday night, July 20th, you will be camping at the Onaway School Complex. The school address is 4549 M-33, Onaway, MI 49765. Park in back of the buildings. You can get to the parking area to the right of the schools. Pitch your tents on the grass behind the school to the right. The bathroom and shower entrances are in the rear of the building. They tell us that they are working on the bathrooms so there may not be hot water.



2018 GREAT LAKES RELAY CAMPING

There are 4 rules that you must follow while camping:

- 1. No drinking on school grounds – it's against the law.**
- 2. Do not throw empty beer cans in the school's garbage. Even if you didn't drink it on school grounds it's still the same as having had alcohol on school grounds.**
- 3. Find the dumpster behind the school and put your garbage in it. Do not leave your garbage by the garbage cans around the school grounds – we have too much.**
- 4. Quiet time starts at 11:00 p.m. Be respectful of the other teams and the community.**

You can use the bathrooms and showers. If you do not follow rules 1-4 above we will not be welcome back. You are not allowed to sleep in the school. Set up camp on the grass. Please leave the school grounds the way they were when you arrived – that means we don't want anyone to know we were there when we leave.

Saturday night, July 21st, you will use the showers at Grayling High School and camp at the school. From the finish of Day 2 at the Pointe North Motel, head north (left out of Pointe North) on Business I-75/F-93 for 2.3 miles to Grayling High School on your left (at 2.1 miles on Bus. 75/F-93 continue straight – you're now on Old US-27).



